

Climate Crisis: Causes, Impacts, and Actions

What is Climate Crisis?

Climate crisis denotes the critical impacts caused by significant changes in the Earth's climate, that are mainly driven by human activities. According to the Intergovernmental Panel on Climate Change (IPCC), the crisis arises mainly from unregulated industrial activities, deforestation, and fossil fuel usage over the last century, which have dramatically increased greenhouse gas (GHG) concentrations in the atmosphere.

Causes/Drivers



Burning of fossil fuels



Land-use changes



Agricultural practices

GLACIERS AND WATER

Rapid glacier melt increases the risk of glacial lake outburst floods (GLOFs) and disrupts river flows.

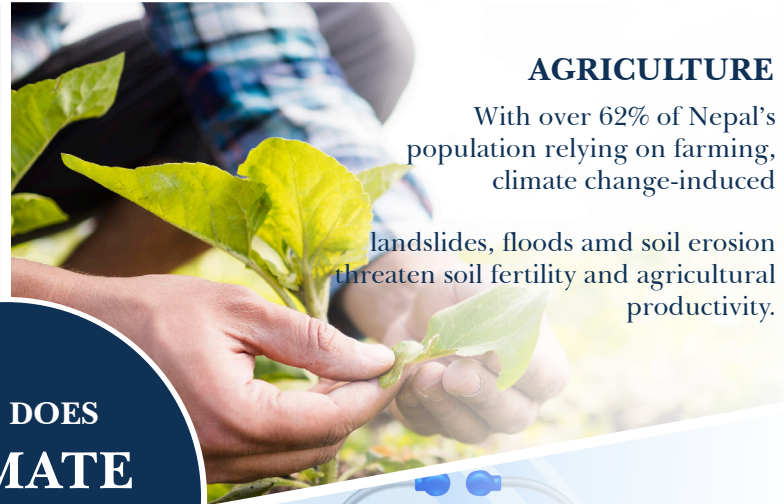
While initial river discharge may rise, it is projected to decrease over time, leading to more frequent floods and droughts.



AGRICULTURE

With over 62% of Nepal's population relying on farming, climate change-induced

landslides, floods and soil erosion threaten soil fertility and agricultural productivity.



HOW DOES CLIMATE CHANGE AFFECT US?

BIODIVERSITY

Nepal's forests, home to rich biodiversity, face challenges such as species loss, forest degradation, and habitat shifts due to climate change.



As the frequency of disasters increases, communities face displacement, livelihoods are lost, and health risks intensify, creating a cycle of challenges that demand urgent attention and action.

HEALTH

Limited adaptation strategy and socioeconomic barriers, particularly affecting women, reduce Nepal's resilience to climate change.



*“without immediate and decisive actions, the world will face catastrophic impacts on **ecosystems, human health, and economic stability.**”*

Collective Action for Climate Change

Addressing climate change requires collective effort through practical actions, community collaboration, and advocacy for systemic change to build a sustainable future.



Engage in local and global advocacy to push for policies aimed at reducing GHG emissions and promoting renewable energy sources.



Build community networks to share resources, knowledge, and sustainable practices.



Choose renewable energy, sustainable products and reduce waste in daily life.